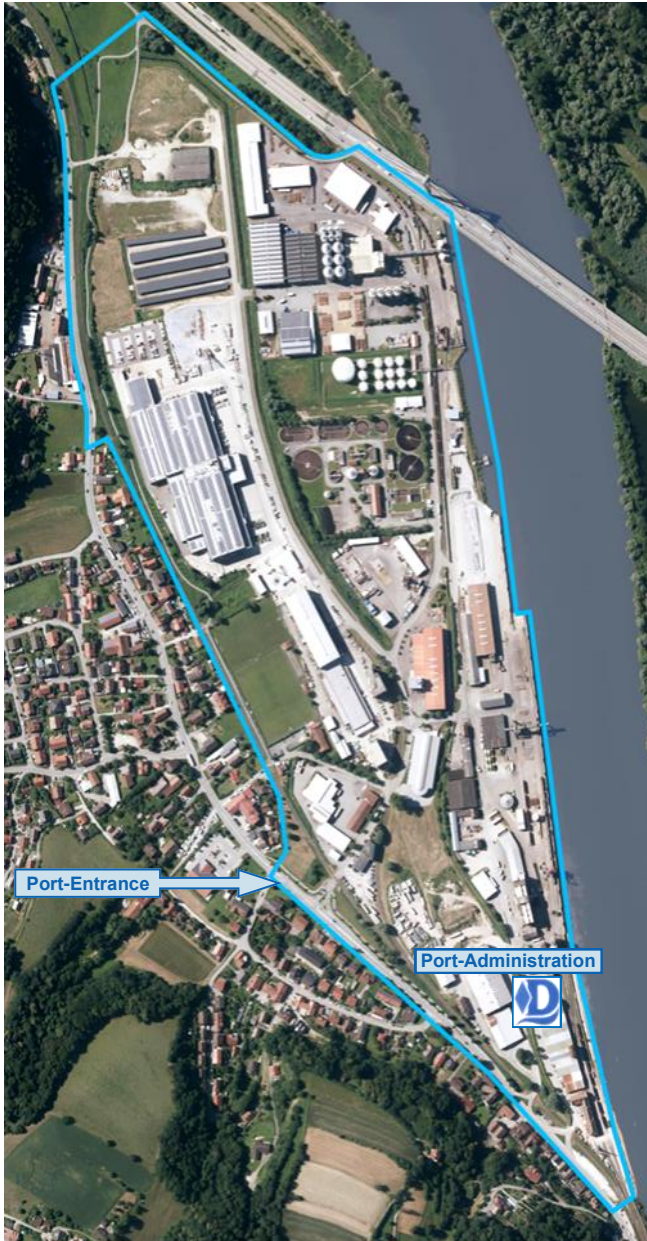


Donau-km 2282,374 – 2283,700 left side

total area of 550.000 m² / >1.300 m quay length



www.hafen-deggendorf.de

Why the Danube Port of Deggendorf?

- **central location – trimodal connection**
- accessible by **Highways A92 and A3**
- **5 min.** to interchange Deggendorf
- **15 min.** to ICE railway station Plattling
- **60 min.** to Munich Airport
- connected to the **rail network of DB**
- **own cranes and shunting locomotives**
- **HIGH & HEAVY** on Ship, Railway and Truck
- own covered and uncovered **storage areas**
- **> 70.000 m² development areas**



Interested?

Contact us:

Zweckverband Donau-Hafen Deggendorf
Wallnerlände 9
D-94469 Deggendorf

Phone: +49 (0) 991 37100 0

Fax: +49 (0) 991 37100 20

info@hafen-deggendorf.de

www.hafen-deggendorf.de



Port of Deggendorf

trimodally Freight Transport Center
on the Danube



Partner for Logistics
in the Heart of Bavaria
in the Middle of Europe

the optimal combination
between ship, railway and truck

www.hafen-deggendorf.de

CARGO HANDLING - HIGH & HEAVY



Portal crane /Container gantry crane

35 tons lifting capacity

- Container Spreader
- Hook
- turnable pulpit
- Pulp Lifting beam
- Poly gripper
- Bulk solid Gripper



Slew-luff-crane

25 tons lifting capacity

- Hook
- Bulk solid gripper
- Pulp Lifting beam
- Poly gripper
- Weighing device



Mobile crane Sennebogen

25 tons lifting capacity

- Hook
- Bulk-solid-gripper
- Pulp Lifting beam
- Weighing device



Mobile crane Liebherr

25 tons lifting capacity

- Hook (turnable)
- Timber gripper
- Bulk solid gripper
- Poly gripper



HIGH & HEAVY / Twin-lift possible



Reach-Stacker

40/45 tons

lifting capacity

- Container Spreader up to five containers stack height

TRAIN - SHUNTING ACTIVITIES



- own shunting lokomotives
- Trains to 440 m in length can be individually delivered and again made available for taking over
- > 5 km own railway network in the port (> 3 km traversable)

STORAGE + SERVICE

- Roll-on/Roll-off-facility
- Heavy-goods-plate (300 t/m²)
- Dangerous-goods-area (1.200 m²)



- Quay with > 20.000 m² transshipment-area
- > 20.000 m² covered storages
- Over- and underground truck scales (50 tons)
- Water and electricity stations for ships
- connection to public gas network and much more
- Highvoltage connection (20 kilovolts)

DEVELOPMENT AREAS



- > 10.000 m² developed hall areas
- > 70.000 m² free for companies serving the port
- For lease or perhaps leasehold



OVERVIEW



- rehearsed team of specialists
- permanently on site to resolve any difficulties and problems
- **All services** are usually offered by the local handling companies
- **These companies** are usually your direct contact person
www.hafen-deggendorf.de/umschlagsberechtigte-firmen/