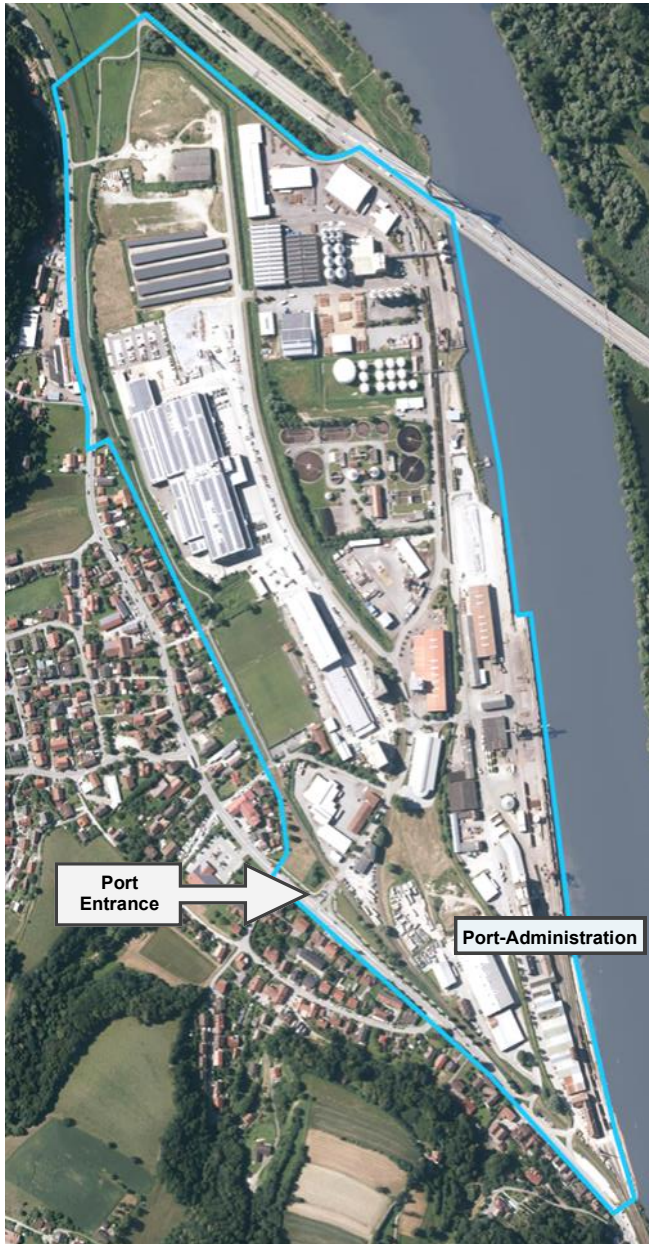


Donau-km 2282,374 – 2283,700 left side
550.000 m² total area



Why the Danube Port of Deggendorf?

- central location - trimodal connection
- accessible by Highways A92 and A3 in 5 min.
- 15 min. to ICE-railway-station Plattling
- 60 min. to Munich Airport
- 1.300 m quay length
- connected to the rail network of DB
- own cranes and shunting locomotives
- own covered and uncovered storage areas
- High&Heavy on Ship, Railway and Truck
- free development areas



Donau-km 2282,374 – 2283,700 links

Interested?

Contact us:

Zweckverband Donau-Hafen Deggendorf
Wallnerlande 9
D-94469 Deggendorf

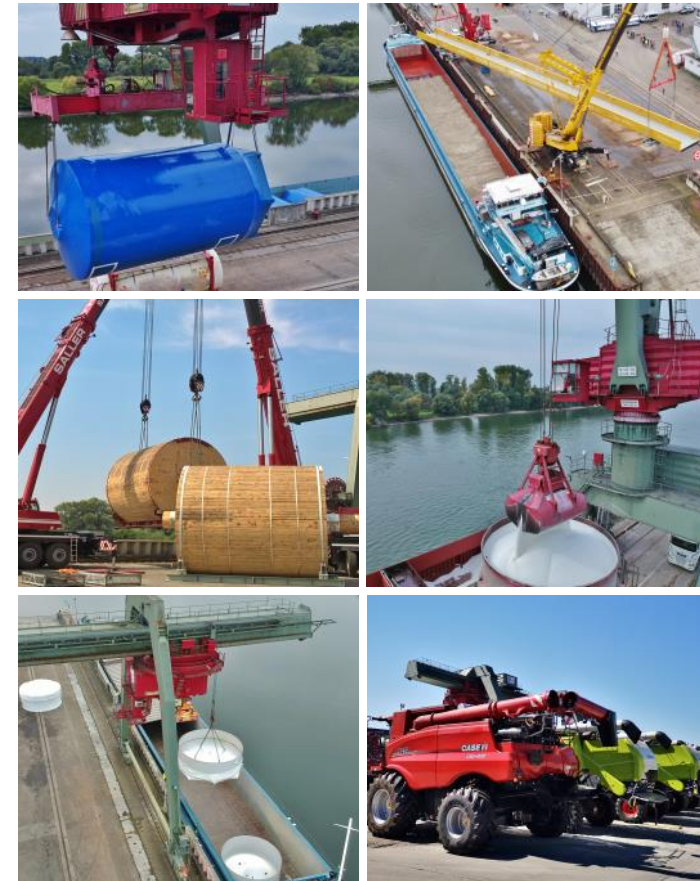
Phone: +49 (0) 991 37100 0

Fax: +49 (0) 991 37100 20

info@hafen-deggendorf.de

www.hafen-deggendorf.de

Port of Deggendorf trimodally Freight Transport Center on the Danube



the optimal combination
between ship, railway and truck

CARGO HANDLING-High&Heavy



Portal crane /Container gantry crane

35 tons lifting capacity

- Container Spreader
- Hook
- turnable pulpit
- Pulp lifting beam
- Poly gripper
- Bulk solid gripper



Slew-luff-crane

25 tons lifting capacity

- Hook
- Bulk solid gripper
- Pulp lifting beam
- Poly gripper
- Weighting device



Mobilecrane Liebherr 954

25 tons lifting capacity

- Hook (turnalbe)
- Timber gripper
- Bulk solid gripper
- Poly gripper

High&Heavy

Twin-lift possible with two mobile cranes



Reach-Stacker

40/45 tons lifting cap.

- Container spreader
- Up to five containers stack height

TRAIN - SHUNTING ACTIVITIES



- **own shunting lokomotives**
- Trains can be individually delivered and again made available for taking over
- > 5 km own railway network (> 3 km traversable)

STORAGE + SER-

- **Roll-on/Roll-off-facility**
- **Heavy-goods-plate** (300 t/m²)
- **Dangerous-goods-area** (1.200 m²)



- **Quay with > 20.000 m² transshipment-area**
- > 20.000 m² **covered storages**
- **Over- and underground truck scales** (0,4 - 50 tons)
- **Water and electricity stations** for ships

DEVELOPMENT-AREAS



- Developed hall areas
- Areas for companies serving the freight transport center for lease or perhaps leasehold



OVERVIEW



- Rehearsed team of specialists
- Permanently on site to resolve any problems
- **All services are offered by the local handling companies.** These companies are usually your direct contact person; find here:

www.hafen-deggendorf.de/umschlagsberechtigte-firmen/